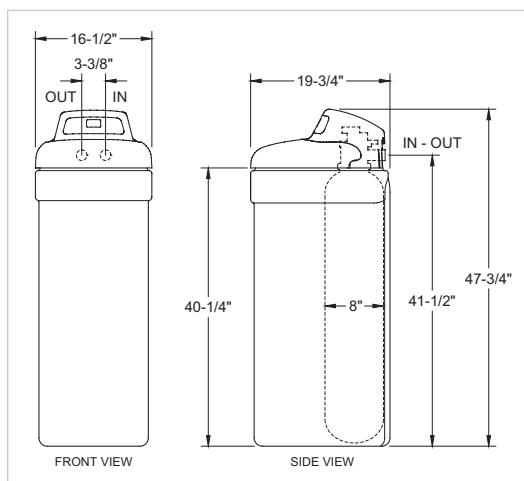




Kenmore Extra High Efficiency Water Softener

42-38350

- IntelliSoft2™ uses up to 30% less salt and 34% less water*
- Ultra Cleansing keeps larger particles of sediment from entering the home plumbing system
- High flow valve
- Lighted LCD screen allows for easy reading and menu selection in areas of low or bright light
- LED salt tank light
- Advanced low salt indicator
- Third party tested and certified by the National Sanitation Foundation (NSF)
- A better choice for families up to 6 people and water hardness up to 45 grains per gallon



*Compared to Kenmore water softeners sold since 2001

SELECTION	42-38350
Demand Initiated Regeneration	•
Display Screen	Lighted LCD
Clock / Settings	12 / 24
IntelliSoft2™	•
Ultra Cleansing	•
Program Memory	12 Hours
Easy to Program Control Panel	•
Low Salt Indicator	Advanced
Salt Tank Light	LED
Recharge Tonight / Immediately	•
Rinse Options	Normal, Clean
Maximum Capacity - Grains	32,100
Salt Storage Capacity (Lbs.)	200
Maximum Salt Efficiency (Grains of Hardness Removed per lb. of Salt)	5,090 @ 2.5 lbs. of Salt
Type of Salt to Use	Potassium Chloride or Sodium Chloride
Regeneration Time (Approx. Min.)	85 – 125
Number of Cycles	5
Audio Feedback Program	•
Optional Recharge Time	•
Water Used During Regeneration (Gallons)	19
Minimum Flow Rate (GPM)	3
Water Pressure Limits (PSI)	20 – 125
Water Temperature Limits (F)	40 – 120
Tested Service Flow Rate (GPM)	8
Maximum Clear Water Iron (PPM)	8
Valve Type	High Flow
High Capacity Resin (cu. ft.)	0.83
NSF® Certified.	•
Install Kit Included	1' Male NPT
By-Pass Valve, Plastic	Included
Drain Tubing 20 ft. Roll	Included
115 / 24V Electrical System	•
Water Inlet / Valve Diameter (In.)	1
Shipping Weight (Approx. Lbs.)	102
WARRANTY	
1-Year Limited Warranty – Entire Appliance	Parts & Labor
10-Years Limited Warranty	Tank

If used for other than private family purposes, warranty applies for only 90 days.